

The Metropolitan Opera

2014-15

Create Your Own Series



HOW TO USE THE ONLINE BROCHURE



To **WATCH A VIDEO CLIP**, click the play icon.
Once a video begins, a control bar will allow you to pause and watch full screen.



To **HEAR A MUSIC CLIP**, click the play icon.
Click again to stop the player.



To **LEARN MORE** about a production on Met Opera on Demand, click the Met Opera on Demand icon.



To **BROWSE** our online product collection, click the Met Opera Shop icon.

NEW PRODUCTION

Le Nozze di Figaro

La Bohème

Macbeth

Carmen

Die Zauberflöte

MET PREMIERE / NEW PRODUCTION

The Death of Klinghoffer

Aida

Lady Macbeth of Mtsensk

Il Barbiere di Siviglia

Die Meistersinger von Nürnberg

La Traviata

HOLIDAY PRESENTATION

Hansel and Gretel

NEW PRODUCTION

The Merry Widow

2014-15

Les Contes d'Hoffmann

MET PREMIERE / NEW PRODUCTION

Iolanta / Bluebeard's Castle

Don Giovanni

MET PREMIERE / NEW PRODUCTION

La Donna del Lago

Manon

Lucia di Lammermoor

Ernani

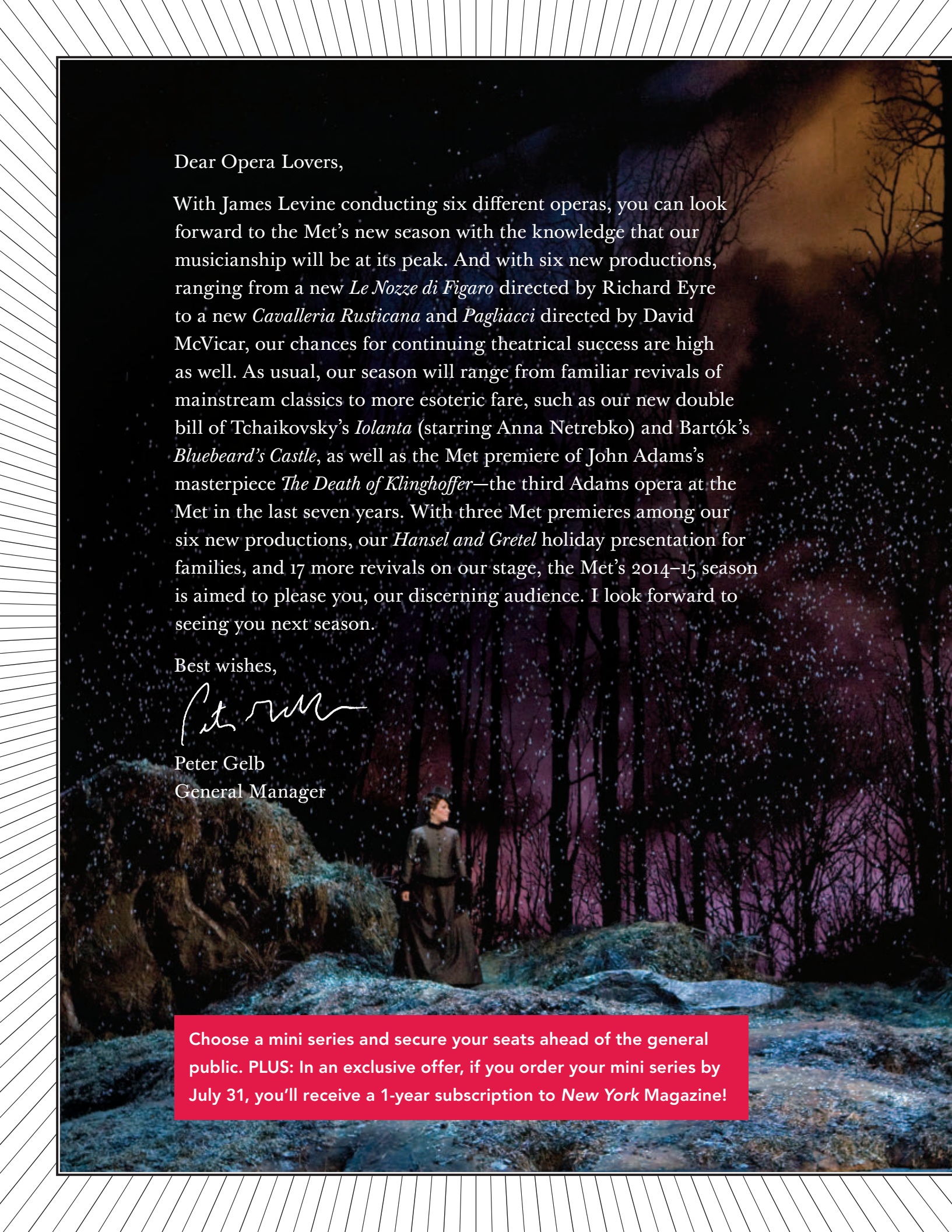
Don Carlo

NEW PRODUCTION

Cavalleria Rusticana / Pagliacci

Un Ballo in Maschera

The Rake's Progress



Dear Opera Lovers,

With James Levine conducting six different operas, you can look forward to the Met's new season with the knowledge that our musicianship will be at its peak. And with six new productions, ranging from a new *Le Nozze di Figaro* directed by Richard Eyre to a new *Cavalleria Rusticana* and *Pagliacci* directed by David McVicar, our chances for continuing theatrical success are high as well. As usual, our season will range from familiar revivals of mainstream classics to more esoteric fare, such as our new double bill of Tchaikovsky's *Iolanta* (starring Anna Netrebko) and Bartók's *Bluebeard's Castle*, as well as the Met premiere of John Adams's masterpiece *The Death of Klinghoffer*—the third Adams opera at the Met in the last seven years. With three Met premieres among our six new productions, our *Hansel and Gretel* holiday presentation for families, and 17 more revivals on our stage, the Met's 2014–15 season is aimed to please you, our discerning audience. I look forward to seeing you next season.

Best wishes,



Peter Gelb
General Manager

Choose a mini series and secure your seats ahead of the general public. PLUS: In an exclusive offer, if you order your mini series by July 31, you'll receive a 1-year subscription to *New York Magazine*!



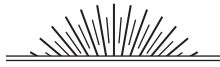
How to Design a “Create Your Own” Mini Series

Create Your Own series are back after an enormously popular launch last year. Thanks to this option, you can tailor your Met experience exactly as you’d like. Explore this brochure to learn all about the Met’s 2014–15 season, then choose whichever productions you’d most like to see. To make the selection process easier, we’ve offered several pages of suggestions, as well as recommendations on each of the repertory pages or visit metopera.org/cyofinder for more recommendations.



ONE

Choose the three (or more) performances you’d like to see.



TWO

Pick the dates that work for you.

SATURDAY eve	FRIDAY	WEDNESDAY
6:00PM Die Meistersinger von Nürnberg Levine; Dieckl, Gergely, Köster, Applis, Reuter, Erlésh, König, Rose B	7:30PM La Bohème Frisco; Secherbachstein, Pappasianis, Hywel, Kelley, Lattin, Scott, Maxwell A	4:30PM Carmen Lavigne; Pérez, Geramita, Kaufman, Bost; C



THREE

Get your seats—ahead of the general public!



[get started](#)

A scene from *Lucia di Lammermoor*



Ildar Abdrazakov as Figaro
PHOTOGRAPHED BY ANNE DENIAU

Wolfgang Amadeus Mozart

Le Nozze di Figaro

NEW PRODUCTION OPENING NIGHT GALA

SEP 22, 25, 27 eve OCT 2, 7, 10, 14, 18 mat, 22, 25 eve
DEC 4, 8, 12, 15, 20 mat

The Met season opens with Music Director James Levine conducting a new production of Mozart's eternal masterpiece, directed by Richard Eyre, who sets the action in a 19th-century manor house in Seville, during the gilded age of the late 1920s. Dashing bass-baritone Ildar Abdrazakov, our Figaro, leads a dazzling cast, including Marlis Petersen as his bride, Susanna, Peter Mattei as the philandering Count, Marina Poplavskaya as the long-suffering Countess, and Isabel Leonard as the lustful pageboy Cherubino. Designer Rob Howell (*Carmen*, *Werther*) utilizes a revolving set to keep the story bubbling along.

Production a gift of Mercedes T. Bass, and Jerry and Jane del Missier

[buy tickets](#)

[learn more](#)



Overture
JANUARY 28, 1995
Metropolitan Opera Orchestra
conducted by James Levine



"Non so più cosa son" Act I
NOVEMBER 27, 2009
Isabel Leonard; Metropolitan Opera
Orchestra conducted by Fabio Luisi



"Se vuol ballare" Act I
NOVEMBER 13, 2012
Ildar Abdrazakov; Metropolitan
Opera Orchestra conducted by
David Robertson



DECEMBER 14, 1985
Levine; Vaness, Battle, von Stade,
Allen, Raimondi



Check back later this month for a video interview with director Richard Eyre

Make It Mozart

Immerse yourself in the genius of one of the greatest composers of all time. Along with *Figaro*, **DIE ZAUBERFLÖTE** and **DON GIOVANNI** form a trio of Mozart's most brilliant works.



Giacomo Puccini

La Bohème

SEP 23, 26, 29 OCT 4 eve NOV 14, 20, 24, 28
DEC 1, 5, 10, 13 eve JAN 15, 19, 24 mat

Franco Zeffirelli's classic take on Puccini's most popular opera, the immortal tale of tragic young love, is set among the rooftops of bohemian Paris. The role of the fragile Mimì is shared by Angela Gheorghiu, Kristine Opolais, and Ekaterina Scherbachenko; the love-sick poet Rodolfo is sung by Bryan Hymel and Ramón Vargas. Riccardo Frizza conducts the production the *New York Times* calls "ravishing... awe-inspiring."

[buy tickets](#)

[learn more](#)



"O soave fanciulla" Act I
APRIL 5, 2008

Angela Gheorghiu, Ramón Vargas;
Metropolitan Opera Orchestra
conducted by Nicola Luisotti

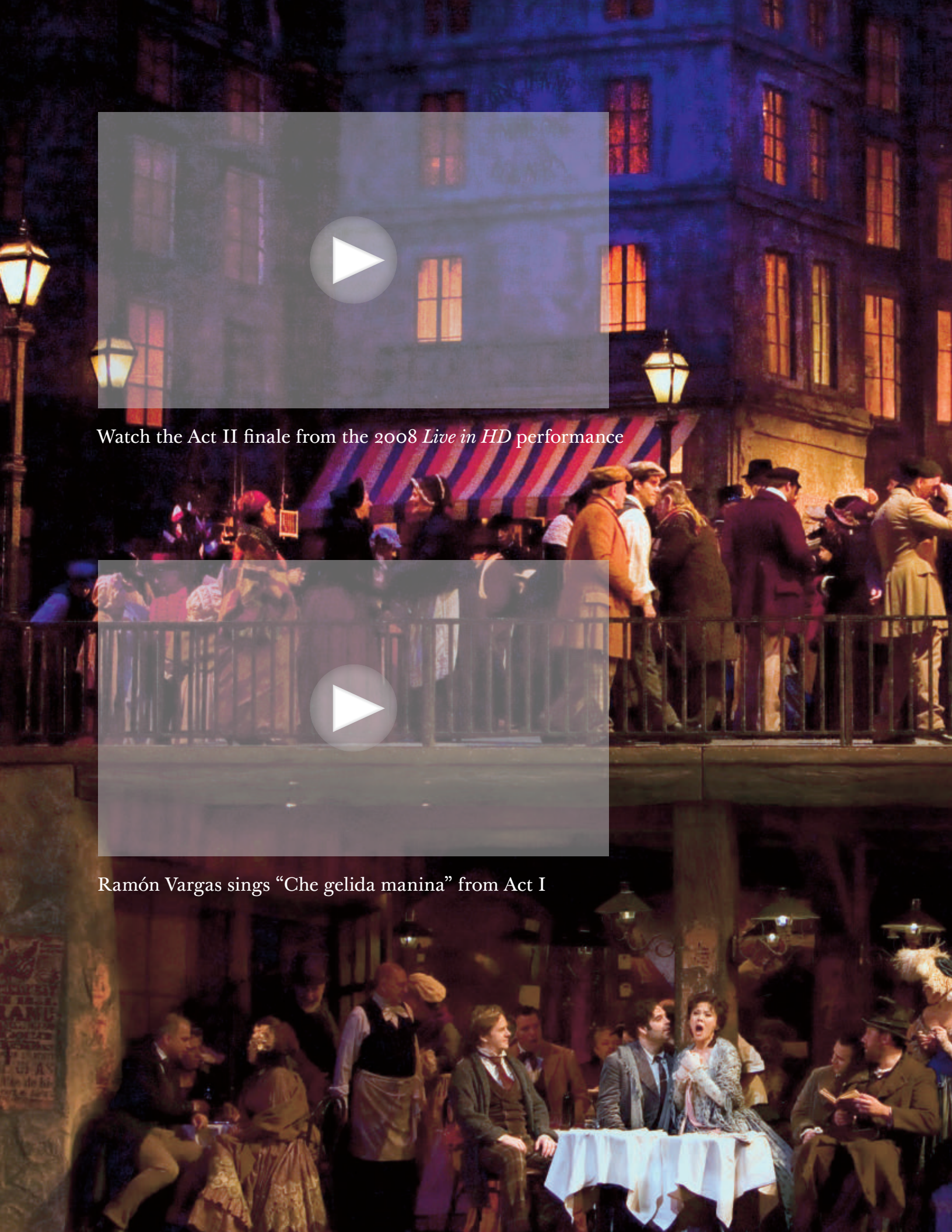


APRIL 5, 2008

Luisotti; Gheorghiu, Arteta,
Vargas, Tézier

Two More Timeless Classics

La Bohème plus Verdi's AIDA and Bizet's CARMEN are the ABC of the standard operatic repertoire.



Watch the Act II finale from the 2008 *Live in HD* performance

Ramón Vargas sings “Che gelida manina” from Act I



Giuseppe Verdi

Macbeth

SEP 24, 27 mat OCT 3, 8, 11 mat, 15, 18 eve

Anna Netrebko moves boldly into Verdi with her searing portrayal of Lady Macbeth, the mad and murderous mate of Željko Lučić's doomed Macbeth. Adrian Noble's chilling production also stars Joseph Calleja as the noble Macduff and René Pape as Banquo. Fabio Luisi conducts.

[buy tickets](#)

[learn more](#)



"Or tutti sorgete" Act I

Anna Netrebko; Gianandrea Noseda,
Orchestra Teatro Regio Torino

Audio clip from *Anna Netrebko: Verdi*
courtesy of Deutsche Grammophon



JANUARY 12, 2008

Levine; Guleghina, Pittas, Lučić,
Relyea

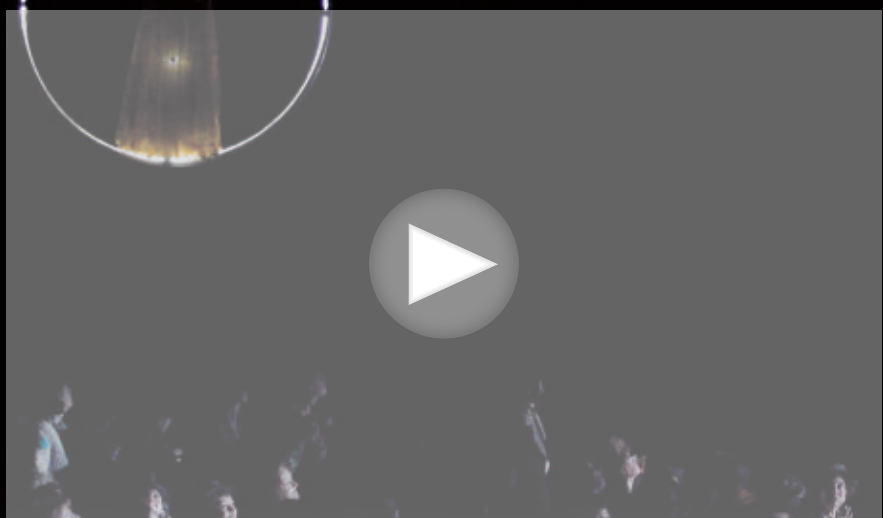
[Shop](#)

Women on the Verge

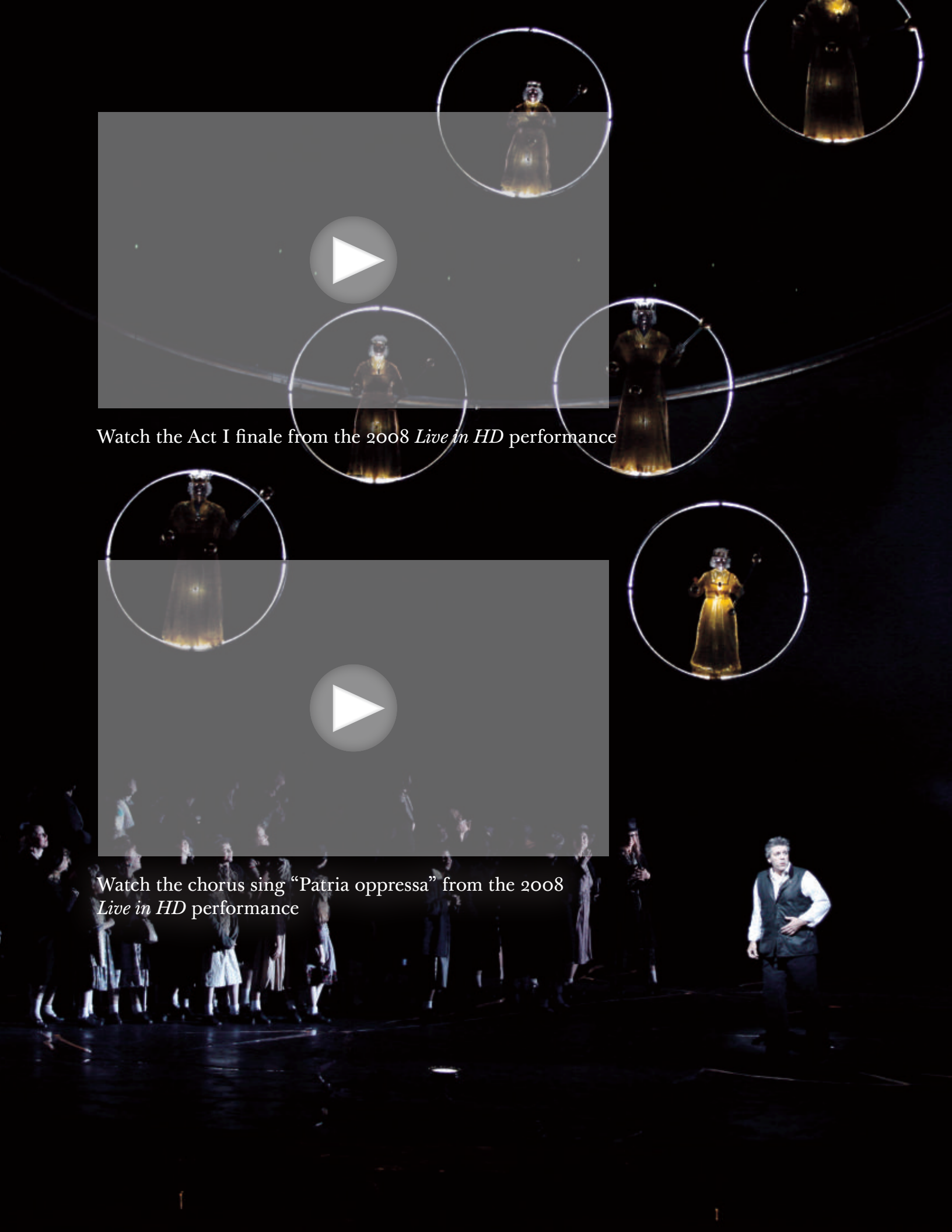
The title character of **LUCIA DI LAMMERMOOR**, with her epic mad scene, is a bel canto cousin to Verdi's sleepwalking Lady Macbeth. And the heroines of **IOLANTA** and **BLUEBEARD'S CASTLE** similarly exist on the edge.



Watch the Act I finale from the 2008 *Live in HD* performance



Watch the chorus sing "Patria oppressa" from the 2008 *Live in HD* performance





Georges Bizet

Carmen

SEP 30 OCT 4 mat, 9, 13, 17, 23, 28 NOV 1 mat
FEB 6, 9, 13, 19, 23, 26 MAR 4, 7 mat

Richard Eyre's stunning production of Bizet's steamy melodrama returns with two of its great leading ladies, Elina Garanča and Anita Rachvelishvili, who share the title role of the ill-fated gypsy temptress. Aleksandrs Antonenko, Roberto Alagna, and Jonas Kaufmann take turns playing Carmen's desperate lover, Don José, and Ildar Abdrazakov is the swaggering bullfighter Escamillo. Pablo Heras-Casado and Louis Langrée share conducting duties.

[buy tickets](#)

[learn more](#)



"L'amour est un oiseau rebelle"

Act I (Habanera)

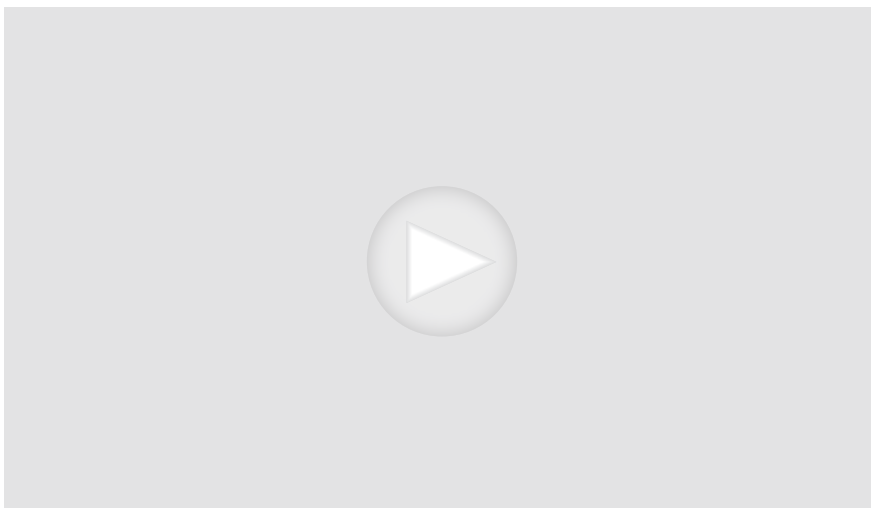
FEBRUARY 23, 2013

Anita Rachvelishvili; Metropolitan
Opera Orchestra and Chorus
conducted by Michele Mariotti



JANUARY 16, 2010

Nézet-Séguin; Frittoli, Garanča,
Alagna, Tahu Rhodes



Elina Garanča and Roberto Alagna sing the final scene

Operatic Temptresses

The title heroines of **MANON** and **LA TRAVIATA** rival Bizet's sultry gypsy for irresistible allure.



Wolfgang Amadeus Mozart

Die Zauberflöte

OCT 6, 11 eve, 16, 21, 25 mat, 27, 31 NOV 3, 8 mat

Julie Taymor's transcendent production of Mozart's magical composition, seen this season in its full-length German version, stars Pretty Yende as Pamina in her first Met performances since her stirring 2013 debut in *Le Comte Ory*. Toby Spence is her prince, Tamino, Markus Werba is Papageno, and the great René Pape is Sarastro. Adam Fischer conducts this spellbinding staging.

[buy tickets](#)

[learn more](#)



Overture

FEBRUARY 9, 1991

Metropolitan Opera Orchestra
conducted by James Levine



"O Isis und Osiris" Act II

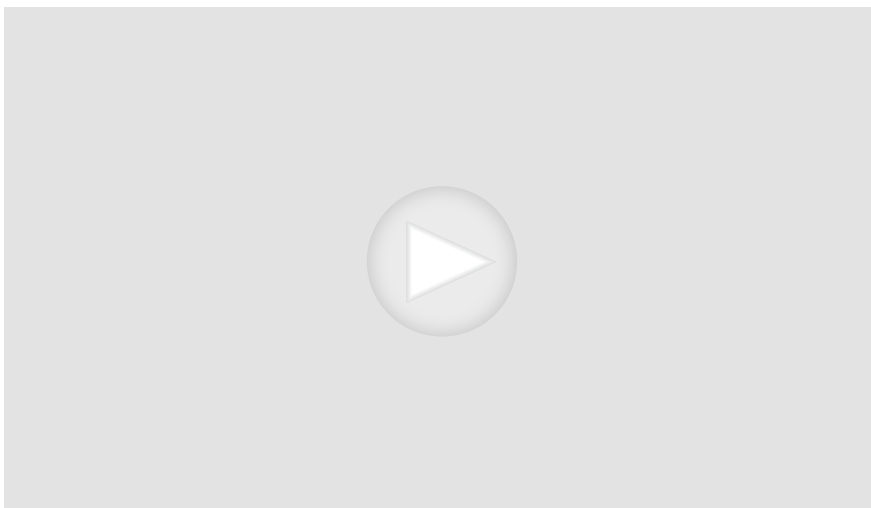
JANUARY 1, 2007

René Pape; Metropolitan
Opera Orchestra and Chorus
conducted by Scott Bergeson



DECEMBER 30, 2006

Levine; Huang, Miklósa, Polenzani,
Pape, Gunn



The Moral of the Story

As with *Die Zauberflöte*, the endings of **DON GIOVANNI** and **HANSEL AND GRETEL** deliver strong moral messages.

Watch the Queen of the Night's aria from Act II in the English-language *The Magic Flute*



ENGLISH NATIONAL OPERA PRODUCTION
PHOTO BY RICHARD HUBERT SMITH

John Adams

The Death of Klinghoffer

NEW PRODUCTION METROPOLITAN OPERA PREMIERE

Libretto by Alice Goodman

OCT 20, 24, 29 NOV 1 eve, 5, 8 eve, 11, 15 mat

In what many John Adams admirers consider his greatest operatic composition, the Met's new production premieres almost 30 years after the events chronicled in this work about the 1985 hijacking of the *Achille Lauro* cruise ship and the horrific killing of one of its passengers. *Klinghoffer* overwhelmed audiences when it premiered just a few years after the tragic incident; now it finally arrives at the Met—the third work by Adams (*Doctor Atomic*, *Nixon in China*) to be staged here in the last seven years. Paulo Szot stars in the leading role, and David Robertson conducts this powerful new production by director Tom Morris (*War Horse*).

Co-production of the Metropolitan Opera and English National Opera

buy tickets

learn more



Night Chorus (excerpt) Act I
Kent Nagano, London Opera Chorus
and Orchestre de l'Opéra de Lyon

Audio clip from *The Death of Klinghoffer*
courtesy of Nonesuch

Shop



Not to Be Missed

IOLANTA joins *Klinghoffer* as one of the season's three Met premiere productions. And Shostakovich's **LADY MACBETH OF MTSENSK** and Bartók's **BLUEBEARD'S CASTLE** are both making rare appearances on the Met stage.

Watch an interview with composer John Adams and director Tom Morris



Giuseppe Verdi

Aida

OCT 30 NOV 4, 7, 12, 15 eve, 19, 22 eve DEC 26, 29
JAN 2, 5, 10 mat APR 9, 13, 17, 20

Grand opera at its grandest: the splendors of ancient Egypt return in the Met's epic staging. Verdi's mythic love triangle features Liudmyla Monastyrska, Latonia Moore, and Oksana Dyka sharing the title role, with Olga Borodina and Violeta Urmana as Amneris and Marcello Giordani and Marco Berti singing Radamès. Marco Armiliato and Plácido Domingo share conducting duties.

[buy tickets](#)

[learn more](#)



"O patria mia" (excerpt) Act III

MARCH 3, 2012

Latonia Moore; Metropolitan Opera
Orchestra conducted by
Marco Armiliato



DECEMBER 15, 2012

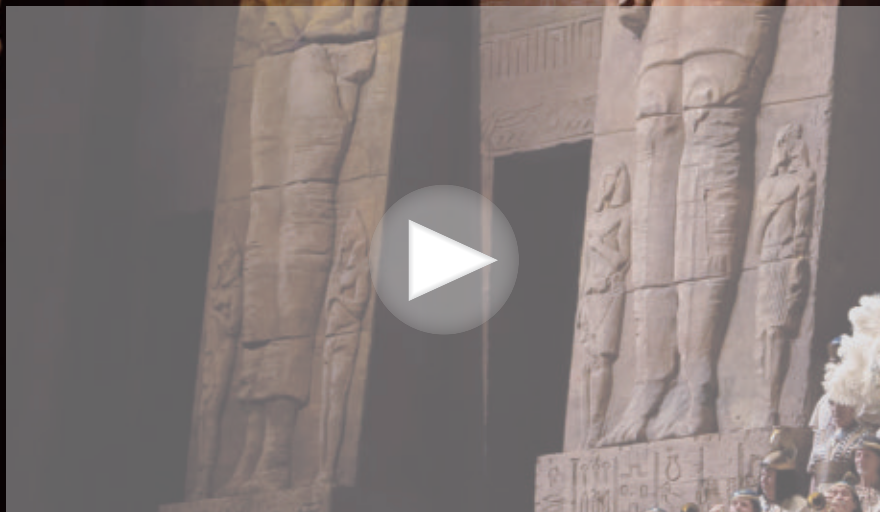
Luisi; Monastyrska, Borodina, Alagna,
Gagnidze, Kocán

Epic Stagings

For sheer theatrical splendor it's hard to beat *Aida*, but Franco Zeffirelli's classic production of **LA BOHÈME** and Verdi's magisterial **DON CARLO** are a good match.



Watch Liudmyla Monastyrska sing an excerpt from her Act I aria



Watch the Triumphant March from Act II





Dmitri Shostakovich

Lady Macbeth of Mtsensk

NOV 10, 13, 17, 21, 25, 29 mat

Shostakovich's towering tragedy of adultery and murder stars the commanding dramatic soprano Eva-Maria Westbroek as the heroine who suffers the vicissitudes of her treachery. Brandon Jovanovich is her co-conspirator and lover, and James Conlon conducts the score that proved so controversial it prompted Stalin himself to denounce the composer.

[buy tickets](#)

[learn more](#)



Convict's Chorus (excerpt) Act IV
MARCH 18, 2000
Metropolitan Opera Orchestra and
Chorus conducted by Valery Gergiev

Twentieth-Century Masterpieces

Like Shostakovich's intense drama, John Adams's **THE DEATH OF KLINGHOFFER** and Stravinsky's **THE RAKE'S PROGRESS** represent the Met's ongoing efforts to expand the range of musical and theatrical offerings.



Gioachino Rossini

Il Barbiere di Siviglia

NOV 18, 22 mat, 26, 29 eve DEC 3, 6 mat

In Bartlett Sher's effervescent production of Rossini's most popular opera, Isabel Leonard is the beautiful and feisty Rosina, who won't be kept under lock and key. Lawrence Brownlee is her conspiring flame, Almaviva, and Christopher Maltman is the endlessly resourceful barber, Figaro. Michele Mariotti conducts the vivid and tuneful score.

[buy tickets](#)

[learn more](#)



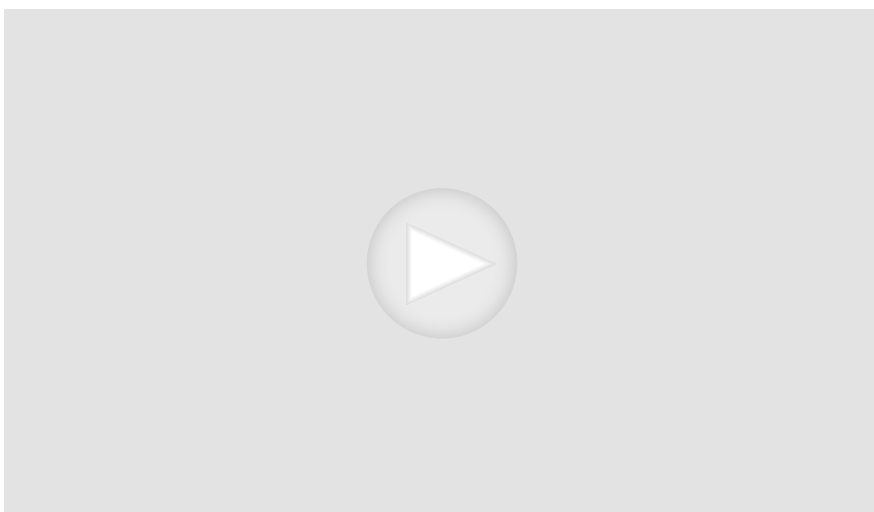
"Una voce poco fa" Act I
OCTOBER 1, 2011

Isabel Leonard; Metropolitan Opera
Orchestra conducted by
Maurizio Benini



MARCH 24, 2007

Benini; DiDonato, Flórez, Mattei,
Del Carlo, Relyea



Watch the Act I finale

Operatic Comedies

It's not all tragedy on the Met stage. In **LE NOZZE DI FIGARO** and **THE MERRY WIDOW**, as with *Barbiere*, the season also offers plenty of comic relief.



Richard Wagner

Die Meistersinger von Nürnberg

DEC 2, 6 eve, 9, 13 mat, 17, 20 eve, 23

James Levine returns to one of his signature Wagner works conducting this epic comedy—back at the Met for the first time in eight years—about a Renaissance song contest that unites a city. Johan Reuter, Johan Botha, and Annette Dasch lead the superb international cast.

[buy tickets](#)

[learn more](#)



Overture

MARCH 13, 2007

Metropolitan Opera Orchestra
conducted by James Levine



“Morgentlich leuchtend im
rosigen Schein” (Prize Song)
Act III

MARCH 13, 2007

Johan Botha, James Morris,
Hei-Kyung Hong; Metropolitan
Opera Orchestra and Chorus
conducted by James Levine



DECEMBER 8, 2001

Levine; Mattila, Heppner, Polenzani,
Morris, Allen, Pape

In a Similar Vein

Like *Die Meistersinger*, Mozart’s **LE NOZZE DI FIGARO** is one of opera’s wisest comedies. And Humperdinck’s score for **HANSEL AND GRETEL** is Wagnerian in scale.



Watch the Act III quintet



Watch the “Wacht auf!” chorus from Act III





Giuseppe Verdi

La Traviata

DEC 11, 16, 19, 22, 27 mat, 30

JAN 7, 10 eve, 14, 17 eve, 21, 24 eve

[buy tickets](#)

[learn more](#)

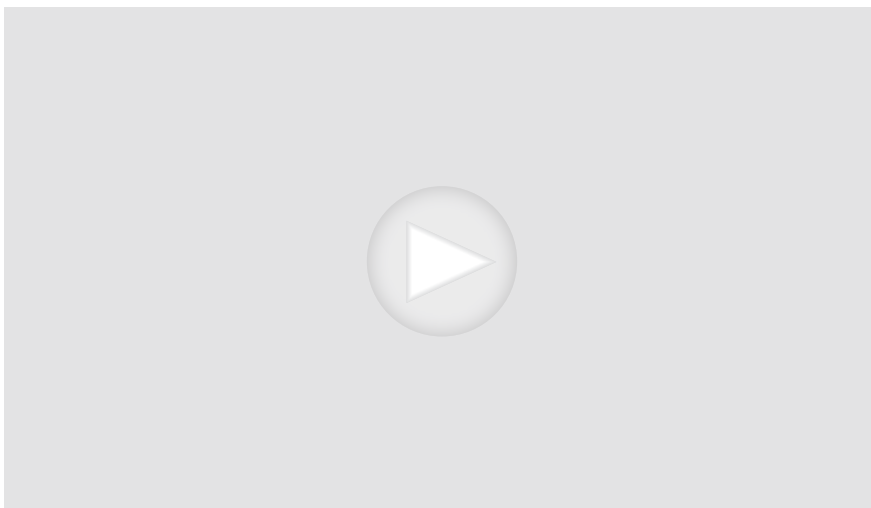


APRIL 14, 2012

Luisi; Dessay, Polenzani, Hvorostovsky

Verdi's consumptive courtesan returns in Willy Decker's timeless setting. Marina Poplavskaya, who originated the title heroine in this striking production at the Met, and the rising soprano Marina Rebeka share the role of Violetta. Stephen Costello and Francesco Demuro are Alfredo, Ludovic Tézier is Germont, and Marco Armiliato conducts.

Original production of the Salzburger Festspiele; with thanks to Dutch National Opera, Amsterdam



Watch a scene from Act I

Searing Italian Dramas

The verismo drama of **CAVALLERIA RUSTICANA/ PAGLIACCI** is the direct descendant of Verdi's gripping theatricality, as seen in his *La Traviata* and **MACBETH**.



A scene from *La Traviata*



Engelbert Humperdinck

Hansel and Gretel

HOLIDAY PRESENTATION

SUNG IN ENGLISH

DEC 18, 23 mat, 27 eve, 30 mat JAN 1, 3 mat, 8

Returning for the holidays, this season's family entertainment is Richard Jones's witty production of Humperdinck's opera, based on the Brothers Grimm fairy tale and inspired musically by none other than Richard Wagner. Sir Andrew Davis conducts the story, in which two children face off against a wicked witch. In a lush setting of giant chefs, suit-clad trees, and an industrial kitchen where the Witch gets what's coming to her, Christine Schäfer as Gretel and Christine Rice as Hansel will lead a visual and delightful feast for our younger patrons.

Originally created for Welsh National Opera and Lyric Opera of Chicago with thanks to Dutch National Opera, Amsterdam

[buy tickets](#)

[learn more](#)

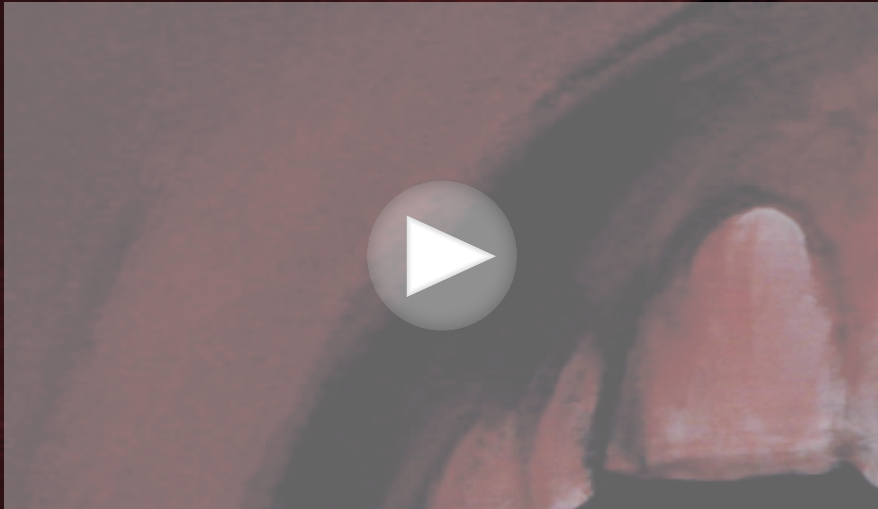


JANUARY 1, 2008

Jurowski; Coote, Schäfer, Plowright,
Held, Langridge

Journey into Fantasy

Like the young siblings at the center of Humperdinck's opera, the protagonists of Mozart's **DIE ZAUBERFLÖTE** and Offenbach's **LES CONTES D'HOFFMANN** lead us on adventures of self-discovery.



Watch the Dream Pantomime from Act II



Watch Robert Brubaker sing the Witch's Ride from Act II



Renée Fleming and Nathan Gunn in *The Merry Widow*
PHOTOGRAPHED BY BRIGITTE LACOMBE

Franz Lehár

The Merry Widow

NEW PRODUCTION NEW YEAR'S EVE GALA

DEC 31 JAN 3 eve, 6, 9, 13, 17 mat, 20, 23, 28, 31 eve
APR 24, 27, 30 MAY 7

The great Renée Fleming stars as the beguiling woman who captivates all Paris in Lehár's enchanting operetta, seen in a new staging by Broadway virtuoso director and choreographer Susan Stroman (*The Producers*, *Oklahoma!*, *Contact*). Stroman and her team of set designer Julian Crouch (*Satyagraha*, *The Enchanted Island*) and costume designer William Ivey Long (*Cinderella*, *Grey Gardens*, *Hairspray*) have created an art-nouveau setting that climaxes with singing and dancing grisettes at the legendary Maxim's. Nathan Gunn co-stars as Danilo and Kelli O'Hara is Valencienne. Mezzo-soprano diva Susan Graham takes on the title role later in the run. Sir Andrew Davis and Fabio Luisi conduct.

Production a gift of The Sybil B. Harrington Endowment Fund

[buy tickets](#)

[learn more](#)



Entr'acte Act III

DECEMBER 23, 2000

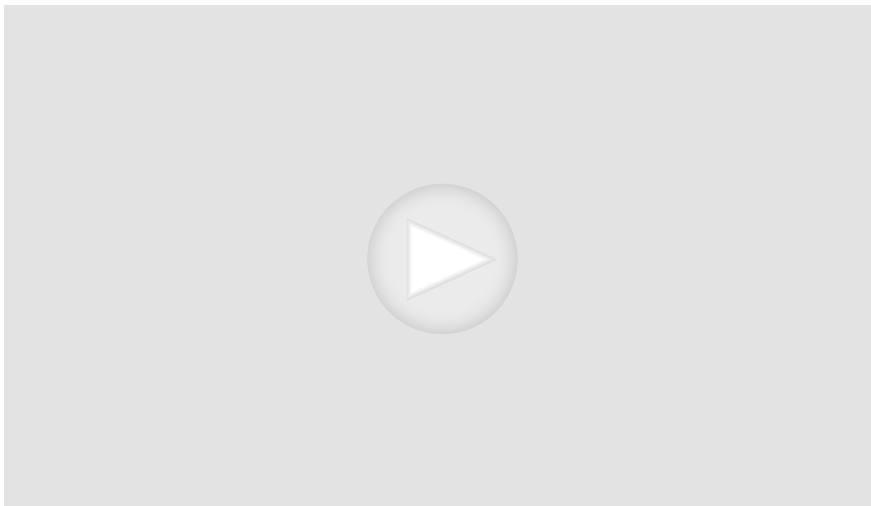
Metropolitan Opera Orchestra
conducted by Asher Fisch



Vilja Song (excerpt) Act II

Renée Fleming, English Chamber
Orchestra & London Voices
conducted by Jeffrey Tate

Audio clip from *Renée Fleming—
The Beautiful Voice* courtesy of Decca
Classics



Watch an interview with director Susan Stroman

We'll Always Have Paris

From the can-can girls of *The Merry Widow* to the Parisian promenades of Massenet's **MANON** and the recreation of the Latin Quarter of Puccini's **LA BOHÈME**, a night at the Met can show you different sides of the City of Lights.



Jacques Offenbach

Les Contes d'Hoffmann

JAN 12, 16, 22, 27, 31 mat FEB 5, 28 eve
MAR 5, 11, 14 eve, 18, 21 eve

Vittorio Grigolo and Matthew Polenzani take turns playing the tortured poet and unwitting adventurer of the title in Offenbach's operatic masterpiece, in the Met's kaleidoscopic production. Hibla Gerzmava faces the operatic hurdle of singing all three heroines—each an idealized embodiment of some aspect of Hoffmann's desire—for the first six performances, with Audrey Luna, Susanna Phillips, and Elena Maximova performing these roles later in the run. Thomas Hampson sings the shadowy Four Villains, and James Levine and Yves Abel conduct the sparkling score.

[buy tickets](#)

[learn more](#)



"Belle nuit, ô nuit d'amour"
(Barcarolle) Act III

DECEMBER 19, 2009

Kate Lindsey, Ekaterina Gubanova;
Metropolitan Opera Orchestra and
Chorus conducted by James Levine



DECEMBER 19, 2009

Levine; Kim, Nettekko, Gubanova,
Calleja, Held

French Romance

Offenbach's urbane *Hoffmann* acts as a bridge between the tragic love-gone-wrong of Massenet's **MANON** and the lightheartedness of Lehár's operetta **THE MERRY WIDOW**.



Watch the Doll Song from Act I

A scene from *Les Contes d'Hoffmann*



Anna Netrebko in *Iolanta*

BADEN-BADEN FESTSPIELHAUS PRODUCTION

PHOTO BY ANDREA KREMPER

Peter Tchaikovsky/Béla Bartók

Iolanta† / Bluebeard's Castle

NEW PRODUCTION †METROPOLITAN OPERA PREMIERE

JAN 26, 29 FEB 3, 7 eve, 10, 14 mat, 18, 21 eve

On the heels of her triumphant Met performances as Tatiana in *Eugene Onegin*, soprano Anna Netrebko takes on another Tchaikovsky heroine in the first opera of this intriguing double bill, consisting of an enchanting fairy tale (*Iolanta*) followed by an erotic psychological thriller (*Bluebeard's Castle*). Netrebko stars as the beautiful blind girl who experiences love for the first time in *Iolanta*, while Nadja Michael is the unwitting victim of the diabolical Bluebeard, played by Mikhail Petrenko. Both operas are directed by Mariusz Trelinski, who was inspired by classic noir films of the 1940s. *Iolanta* also stars Piotr Beczala as the Count, and Maestro Valery Gergiev conducts both operas.

Production a gift of Ambassador and Mrs. Nicholas F. Taubman

Additional funding from Dr. Magdalena Berenyi, in memory of Dr. Kalman Berenyi

Co-production of the Metropolitan Opera and Teatr Wielki-Polish National Opera

[buy tickets](#)

[learn more](#)



"Atchevo eta prezhdne ne znala"
(excerpt from *Iolanta*)

Anna Netrebko; Mariinsky Theatre
Orchestra conducted by Valery Gergiev

Audio clip from *Russian Album* courtesy of
Deutsche Grammophon



The fifth door (excerpt from
Bluebeard's Castle)

JANUARY 28, 1989

Metropolitan Opera Orchestra
conducted by James Levine



Double It Up

For opera fans interested
in double the action,
CAVALLERIA RUSTICANA
and **PAGLIACCI** form another
compelling choice.

Watch an interview with director Mariusz Trelinski



Wolfgang Amadeus Mozart

Don Giovanni

FEB 4, 7 mat, 11, 14 eve, 17, 21 mat, 24, 27 MAR 2, 6

The magnetic Peter Mattei is Don Giovanni, opera's irrepressible cad, performing alongside the starry ensemble of Elza van den Heever, Emma Bell, and Luca Pisaroni. New York Philharmonic Music Director Alan Gilbert crosses the Lincoln Center Plaza to conduct Mozart's telling of the Don Juan story.

[buy tickets](#)

[learn more](#)



"Fin ch'han dal vino" Act I

OCTOBER 17, 2011

Peter Mattei; Metropolitan Opera
Orchestra conducted by Fabio Luisi



OCTOBER 29, 2011

Luisi; Rebeka, Frittoli, Erdmann, Vargas,
Kwicien, Pisaroni



Rogues Gallery

Don Giovanni is just one of this season's operas featuring a hero who plays the field, along with Offenbach's **LES CONTES D'HOFFMANN** and Stravinsky's **THE RAKE'S PROGRESS**.

Watch excerpts from *Don Giovanni*



A scene from *Don Giovanni*



Gioachino Rossini

La Donna del Lago

NEW PRODUCTION METROPOLITAN OPERA PREMIERE

FEB 16, 20, 25, 28 mat MAR 3, 7 eve, 10, 14 mat

Joyce DiDonato and Juan Diego Flórez join forces for this Rossini showcase of bel canto virtuosity, set in the medieval Scottish highlands. DiDonato is the “lady of the lake” of the title, and Flórez is the king who relentlessly pursues her, with their vocal fireworks embellishing the tragic plot. This Met premiere production is directed by Paul Curran and conducted by Michele Mariotti.

Production a gift of the Betsy and Edward Cohen/Areté Foundation Fund for New Productions & Revivals, and Dominique and Frédéric Laffont

Additional funding from Mr. and Mrs. William R. Miller

Co-production of the Metropolitan Opera and the Santa Fe Opera

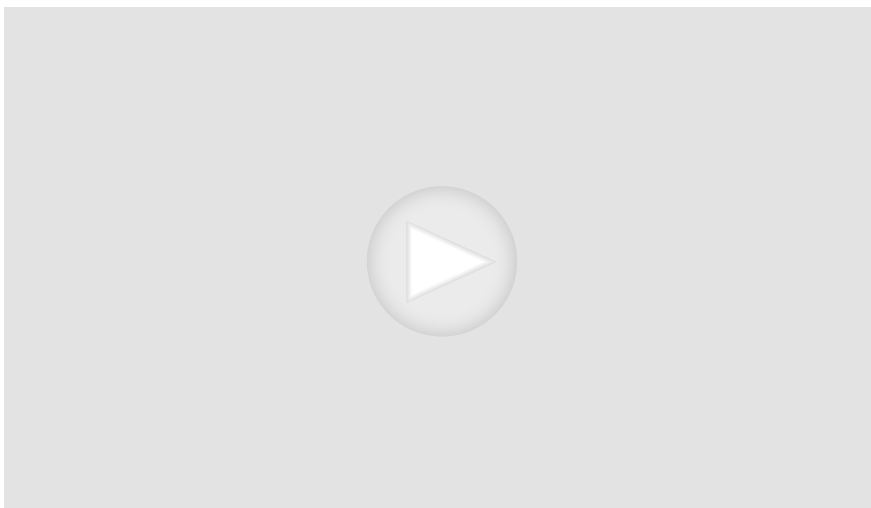
[buy tickets](#)

[learn more](#)



“Tanti affetti in tal momento” Act II
Joyce DiDonato; Edoardo Müller,
Orchestra e Coro dell’Accademia
Nazionale de Santa Cecilia

Audio clip from *Rossini: Colbran, the Muse*
courtesy of Erato/Warner Classics



Watch an interview with director Paul Curran

VIDEO PHOTOS: PAUL HORPEDAHL AND KEN HOWARD

The Art of the Diva

Like the title character of *La Donna del Lago*, the heroines of Donizetti’s **LUCIA DI LAMMERMOOR** and Verdi’s **LA TRAVIATA** will dazzle with their virtuoso vocalism.



Jules Massenet

Manon

MAR 9, 12, 17, 21 mat, 25, 28 eve

The vocally high-flying soprano Diana Damrau—recently praised by the *New York Times* in *La Traviata* as “nothing short of sensational”—sings her first Met performances of Massenet’s beguiling heroine. As the young woman who lives for love and luxury, she stars opposite the ardent tenor Vittorio Grigolo. Emmanuel Villaume conducts Laurent Pelly’s elegant production.

Co-production of the Metropolitan Opera; the Royal Opera House, Covent Garden, London; Teatro alla Scala, Milan; and Théâtre du Capitole de Toulouse

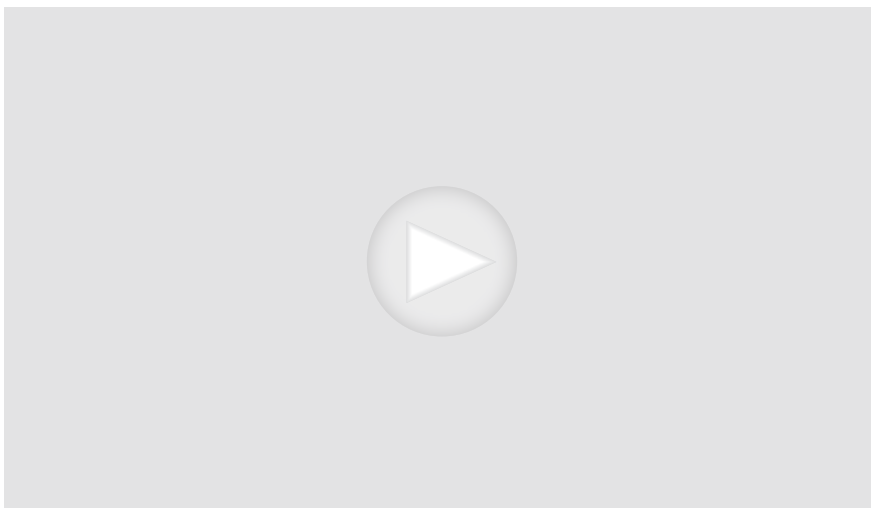
[buy tickets](#)

[learn more](#)



APRIL 7, 2012

Luisi; Netrebko, Beczala, Szot, Pittsinger



Watch the Act IV finale

Forbidden Love

Opera is famous for its improbable, ill-fated romances. As with *Manon*, Offenbach’s **LES CONTES D’HOFFMANN** (which features four of these disastrous pairings) and Verdi’s **LA TRAVIATA** reach ecstatic highs before plunging to romantic despair.



Gaetano Donizetti

Lucia di Lammermoor

MAR 16, 19, 24, 28 mat APR 1, 4 eve, 7, 10

New coloratura talent Albina Shagimuratova sings bel canto's unhinged bride, delivering opera's most thrilling mad scene. Joseph Calleja is her tragic lover. Mary Zimmerman's production evokes the moors and castles of Scotland for Donizetti's melodic journey of love and deception, conducted by Maurizio Benini.

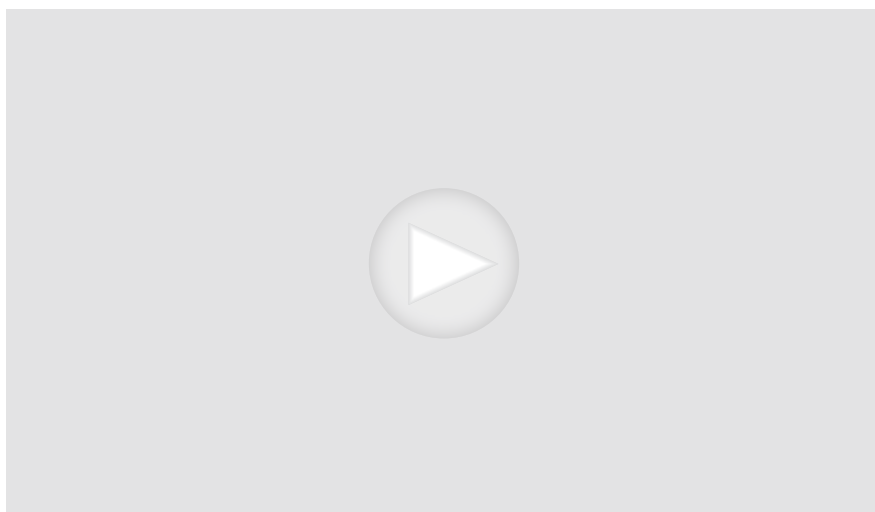
[buy tickets](#)

[learn more](#)



MARCH 19, 2011

Summers; Dessay, Calleja, Tézier, Youn



Watch the sextet from Act II

The Spirit of Bel Canto

While *Lucia di Lammermoor* and Rossini's **LA DONNA DEL LAGO** are classic examples of the bel canto tradition, the essence of beautiful singing is also demonstrated in Verdi's early opera **ERNANI**.



Giuseppe Verdi

Ernani

MAR 20, 23, 26, 31 APR 4 mat, 8, 11 eve

James Levine and Plácido Domingo reunite for Levine's first Met *Ernani* since 1983 and Domingo's first-ever performances of the baritone role of Don Carlo. Francesco Meli stars in the title role of the desperate Spanish bandit, and Angela Meade is the soprano heroine Elvira, caught between the rivals for her love.

[buy tickets](#)

[learn more](#)



FEBRUARY 25, 2012
Armiliato; Meade, Giordani,
Hvorostovsky, Furlanetto

Three by Verdi

Immerse yourself in the art of one of opera's titanic composers. Verdi's **UN BALLO IN MASCHERA** and **MACBETH**, along with *Ernani*, demonstrate his astonishing musical range.



Watch Angela Meade sing “Ernani, involami” from Act I



Watch the trio from Act I



Giuseppe Verdi

Don Carlo

MAR 30 APR 2, 6, 11 mat, 15, 18 mat, 22, 25 eve

Dynamic maestro Yannick Nézet-Séguin conducts Verdi's most ambitious opera, set against the backdrop of the Spanish Inquisition, with a stand-out cast in Nicholas Hytner's handsome production. Yonghoon Lee sings the title role, with Barbara Frittoli, Ekaterina Gubanova, Simon Keenlyside, and James Morris; Ferruccio Furlanetto reprises his definitive portrayal of King Philip.

Co-production of the Metropolitan Opera; the Royal Opera House, Covent Garden, London; and the Norwegian National Opera and Ballet

[buy tickets](#)

[learn more](#)



"Dio, che nell'alma infondere"
Act I

DECEMBER 18, 2010

Yonghoon Lee, Simon Keenlyside,
Alexei Tanovitski; Metropolitan
Opera Orchestra and Chorus
conducted by Yannick Nézet-Séguin



DECEMBER 11, 2010

Nézet-Séguin; Poplavskaya,
Smirnova, Alagna, Keenlyside,
Furlanetto

On a Grand Scale

The large-scale forces of *Don Carlo* represent Verdi at his boldest. His **AIDA** is another larger-than-life work, and for Wagnerian monumentality, the epic **DIE MEISTERSINGER VON NÜRNBERG** is one of the grandest of all operatic visions.



Watch Ferruccio Furlanetto sing “Ella giammai m’amò”
from Act IV



A scene from *Don Carlo*



Marcelo Álvarez as Canio in *Pagliacci* and Turiddu in *Cavalleria Rusticana*

PHOTOGRAPHED BY ANNE DENIAU

Pietro Mascagni/Ruggero Leoncavallo

Cavalleria Rusticana / Pagliacci

NEW PRODUCTION

APR 14, 18 eve, 21, 25 mat, 29 MAY 2 eve, 5, 8

Opera's most enduring tragic double bill returns in an evocative new production from Sir David McVicar (*Giulio Cesare, Maria Stuarda, Il Trovatore*), who sets the verismo action across two time periods but in the same Sicilian setting. Marcelo Álvarez rises to the challenge of playing the dual tenor roles of Turiddu in *Cavalleria Rusticana* and Canio in *Pagliacci*. Rae Smith (*War Horse*) has designed the moodily atmospheric 1900 village square setting of *Cavalleria Rusticana*, which transforms to a 1948 truck stop for the doomed vaudeville troupe of *Pagliacci*. Eva-Maria Westbroek (*Cav*) and Patricia Racette (*Pag*) play the unlucky heroines. Met Principal Conductor Fabio Luisi is on the podium.

Production a gift of M. Beverly and Robert G. Bartner

Major funding by Rolex

Additional funding from the Estate of Anne Tallman, John J. Noffo Kahn and Mark Addison, and Paul Underwood

[buy tickets](#)

[learn more](#)



"Inneggiamo, Il Signor"
(Easter Hymn) (excerpt from
Cavalleria Rusticana)

OCTOBER 26, 2006

Maria Guleghina; Metropolitan
Opera
Orchestra conducted by
Marco Armiliato



Intermezzo from *Cavalleria
Rusticana*

OCTOBER 30, 2006

Metropolitan Opera Orchestra
conducted by Marco Armiliato



"Recitar! ... Vesti la giubba" (from
Pagliacci)

APRIL 5, 1978

Plácido Domingo; Metropolitan
Opera Orchestra conducted by
James Levine



APRIL 5, 1978

Levine; Troyanos, Domingo, Shinall,
Stratas, Milnes



Visceral Drama

Taken together, *Cav* and *Pag* are the calling cards of verismo opera. Similarly Puccini's **LA BOHÈME** and Bizet's **CARMEN** focus on the intense drama in the lives of ordinary people.

Watch an interview with director Sir David McVicar



Giuseppe Verdi

Un Ballo in Maschera

APR 23, 28 MAY 2 mat, 6, 9 eve

Tenor Piotr Beczala sings King Gustavo for the first time at the Met in his very first collaboration with Music Director James Levine. Sondra Radvanovsky, Dolora Zajick, and Dmitri Hvorostovsky reprise their acclaimed interpretations in the revival of David Alden's film noir-inspired production of Verdi's tragic love triangle set in the Swedish court.

Co-production of the Metropolitan Opera; the Royal Opera House, Covent Garden, London; Teatro alla Scala, Milan; and Théâtre du Capitole de Toulouse

[buy tickets](#)

[learn more](#)



"Morrò, ma prima in grazia"
Act III

DECEMBER 8, 2012

Sondra Radvanovsky; Metropolitan Opera Orchestra conducted by Fabio Luisi



DECEMBER 8, 2012

Luisi; Radvanovsky, Kim, Blythe, Álvarez, Hvorostovsky



Verdi Sampler

From the multifaceted nuances of *Ballo* to the poignancy of **LA TRAVIATA** and the power of **MACBETH**, these operas are Verdi at his theatrical best.

Watch Dmitri Hvorostovsky sing "Eri tu" from Act III



A scene from *Un Ballo in Maschera*



Igor Stravinsky

The Rake's Progress

MAY 1, 4, 9 mat

James Levine revisits one of his favorite 20th-century classics: Stravinsky's only full-length opera, with its wondrous neo-classical score, back on the Met stage for the first time in 12 years. Paul Appleby adds another leading role as Tom Rakewell, opposite Layla Claire as Anne Trulove, Stephanie Blythe as the bearded lady Baba the Turk, and Gerald Finley as the devilish Nick Shadow, in this visionary look at love and morality.

[buy tickets](#)

[learn more](#)



"As I was saying both brothers wore moustaches" (excerpt)
Act II

APRIL 19, 2003

Stephanie Blythe; Metropolitan Opera Orchestra conducted by James Levine



APRIL 19, 2003

Levine; Upshaw, Blythe, Groves, Ramey

From Classical to Contemporary

It's easy to detect the influence of Mozart's **LE NOZZE DI FIGARO** on Stravinsky's classically constructed *The Rake's Progress*. And *Rake's* modern musical language aligns it with another 20th-century work, Shostakovich's **LADY MACBETH OF MTSENSK**.

REPERTORY ROUNDUP

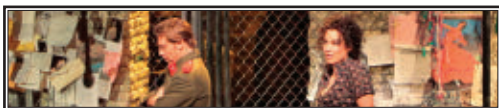
THEMATIC SUGGESTIONS FOR CREATING YOUR OWN SERIES

DATE NIGHT

Dress up, drink champagne, and let these operas make for an unforgettable date.



LA BOHÈME



CARMEN



IL BARBIERE DI SIVIGLIA



LA TRAVIATA



THE MERRY WIDOW



LA DONNA DEL LAGO



MANON



LUCIA DI LAMMERMOOR



CAVALLERIA RUSTICANA/PAGLIACCI

INSPIRED BY LITERATURE

The composers of these operas turned to the likes of Shakespeare, Beaumarchais, the Brothers Grimm and beyond for inspiration.



LE NOZZE DI FIGARO



MACBETH



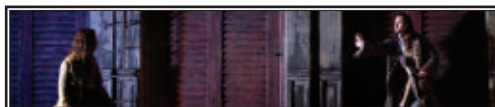
IL BARBIERE DI SIVIGLIA



LA TRAVIATA



LES CONTES D'HOFFMANN



DON GIOVANNI



LUCIA DI LAMMERMOOR



DON CARLO



HANSEL AND GRETEL

REPERTORY ROUNDUP

THEMATIC SUGGESTIONS FOR CREATING YOUR OWN SERIES

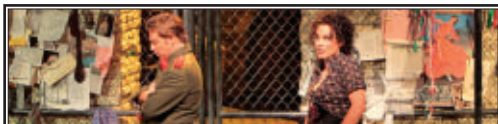


DIVAS

The world's top sopranos and mezzos will be appearing at the Met this season in these magnificent diva showcases.



MACBETH



CARMEN



AIDA



THE MERRY WIDOW



IOLANTA/BUEBEARD'S CASTLE



LA DONNA DEL LAGO



MANON



LUCIA DI LAMMERMOOR

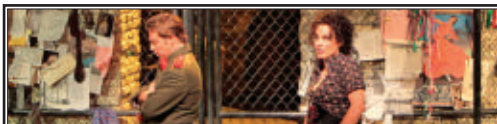


TRAGIC LOVE

The greatest love stories often end badly, as seen in these eight tragic tales.



LA BOHÈME



CARMEN



AIDA



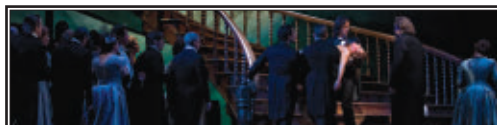
LADY MACBETH OF MTSENSK



LA TRAVIATA



MANON



LUCIA DI LAMMERMOOR



ERNANI

REPERTORY ROUNDUP

THEMATIC SUGGESTIONS FOR CREATING YOUR OWN SERIES

GRAND SPECTACLES

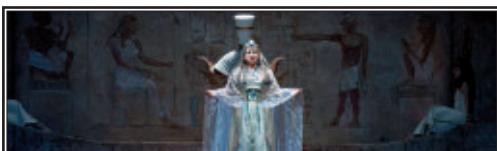
These seven breathtaking productions, with their elaborate sets and enormous casts, represent grand opera at its grandest.



LA BOHÈME



CARMEN



AIDA



DIE MEISTERSINGER VON NÜRNBERG



LES CONTES D'HOFFMANN



DON CARLO



UN BALLO IN MASCHERA

GAME CHANGERS

Whether musically groundbreaking or theatrically daring, these works pushed the operatic envelope.



LE NOZZE DI FIGARO



THE DEATH OF KLINGHOFFER



LADY MACBETH OF MTSENSK



DIE MEISTERSINGER VON NÜRNBERG



IOLANTA/BLUEBEARD'S CASTLE



UN BALLO IN MASCHERA



THE RAKE'S PROGRESS

The MET Orchestra at Carnegie Hall

The incomparable MET Orchestra, conducted by Music Director James Levine, returns to Carnegie Hall for its acclaimed annual three-concert series. The 2014-15 season features mezzo-soprano Elina Garanča and pianists Maurizio Pollini and Yefim Bronfman as guest soloists.

JAMES LEVINE CONDUCTOR

MAURIZIO POLLINI PIANIST

MOZART Piano Concerto No. 21 in C, K. 467
MAHLER Symphony No. 9

JAMES LEVINE CONDUCTOR

ELĪNA GARANČA MEZZO-SOPRANO

BEETHOVEN Symphony No. 2 in D, Op. 36
BERG Seven Early Songs
CARTER *Three Illusions*
SCHUMANN Symphony No. 2 in C, Op. 61

JAMES LEVINE CONDUCTOR

YEFIM BRONFMAN PIANIST

BRAHMS Piano concerto No. 1 in D minor, Op. 15
BERLIOZ *Symphonie Fantastique*, Op. 14

For tickets and additional details visit carnegiehall.org or call CarnegieCharge at 212.247.7800



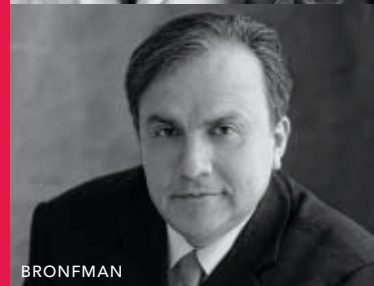
LEVINE



POLLINI



GARANČA



BRONFMAN

Add to your series...

René Pape in Recital

One of today's most renowned artists, bass René Pape will present a solo recital of works by Dvořák, Beethoven, Ravel, and Mussorgsky.

SUNDAY, SEPTEMBER 28, 2014, 4PM

RENÉ PAPE BASS

CAMILLO RADICKE PIANIST

buy now



Save with a Full Season Subscription!

Our "Create Your Own" series are just one way you can experience the Met's season. For the best possible savings, no-fee ticket exchange, and more, a full Season Subscription is the best option. For more information or to place a subscription order, visit metopera.org/subscribe.

Subscription benefits include:

- *Savings of at least 15%* over the cost of single tickets (10% for matinee Subscribers)
- *The ability to exchange tickets*—for free—into any performance you want (except the Opening Night and New Year's Eve galas)
- *Advance access to single tickets*, months before the box office opens to the general public
- *The chance to lock in your prices* on single tickets, which otherwise may go up
- *A monthly payment plan option* through June 2014
- *A Subscribers-only hotline* for personalized assistance
- *Subscribers-only offers* and events throughout the season

[subscribe now](#)

Bring a Group to the Met

Whether you're a group of students, professionals, seniors, friends, or travelers, the Met offers extraordinary benefits when you book ten or more tickets to a single performance. Learn more about our groups program at metopera.org/groups, or call 212.501.3410.

Special Events of the 2014-15 Season



Anna Netrebko in *Iolanta*

BADEN-BADEN FESTSPIELHAUS PRODUCTION

PHOTO BY ANDREA KREMPER



Le Nozze di Figaro

NEW PRODUCTION PREMIERE

OPENING NIGHT GALA

MONDAY, SEPTEMBER 22, 2014 6:15 PM

The 2014–15 season opens with Richard Eyre's new production of Mozart's sublime masterpiece, with Music Director James Levine conducting. Ildar Abdrazakov leads the superb ensemble cast, along with Marina Poplavskaya, Marlis Petersen, Isabel Leonard, and Peter Mattei. The Opening Night performance will be followed by a gala dinner with the cast, sponsored by Deutsche Bank. Additional funding provided by Manhattan Jaguar.

The Merry Widow

NEW PRODUCTION PREMIERE

NEW YEAR'S EVE GALA

WEDNESDAY, DECEMBER 31, 2014 7:00 PM

Ring in 2015 with star soprano Renée Fleming in the title role of Lehár's sparkling operetta, when Susan Stroman's new production has its premiere on New Year's Eve. Fleming stars opposite baritone Nathan Gunn, and Sir Andrew Davis conducts. The gala performance is followed by dinner and dancing on the Mercedes T. Bass Grand Tier.

Iolanta / Bluebeard's Castle

NEW PRODUCTION

GALA PREMIERE

MONDAY, JANUARY 26, 2015 8:00 PM

Anna Netrebko sings the title role of Tchaikovsky's *Iolanta* opposite Piotr Beczala, in the gala premiere of Mariusz Trelinski's new production, conducted by Valery Gergiev. *Iolanta* shares the stage with Trelinski's new staging of Bartók's only opera, *Bluebeard's Castle*, starring Nadja Michael and Mikhail Petrenko. Cocktails and dinner on the Mercedes T. Bass Grand Tier precede the performance.

Cavalleria Rusticana / Pagliacci

NEW PRODUCTION

GALA PREMIERE

TUESDAY, APRIL 14, 2015 8:00 PM

Another exciting double bill serves as the final gala of the season: *Cavalleria Rusticana* and *Pagliacci*, in a new production by Sir David McVicar. Marcelo Álvarez stars in both operas, opposite Eva-Maria Westbroek in *Cav* and Patricia Racette in *Pag*. Fabio Luisi conducts. Cocktails and dinner on the Mercedes T. Bass Grand Tier precede the performance.

Members Get More

ENJOY A WIDE ARRAY OF BENEFITS DESIGNED EXCLUSIVELY FOR PATRONS AND MEMBERS—YOUR GIFT WILL BE MATCHED.

If you are already a member, an additional contribution is a wonderful way to enjoy increased ticket priority and benefits while providing vital support to the Met.

Ticket sales cover less than half of the Met's annual operating budget. **Contributions from members make a significant difference, and right now, two Met Opera Board Members, Ambassador Nicholas Taubman and Susan Braddock, have generously offered challenge grants—matching all new and increased Patron and Guild Membership gifts dollar for dollar, allowing your contribution to go even further in supporting the Met.** Please consider becoming a member or increasing your membership support to the next level today and help the Met take advantage of this limited-time opportunity.

Members enjoy exclusive benefits that increase with each level of giving, including priority ticketing for Met performances, advance access to tickets for *Live in HD* transmissions, access to the Belmont Room membership lounge or Patron Lounge, invitations to dress rehearsals, private master classes, backstage tours, a subscription to *Opera News* magazine, and much more!

While the benefits of membership are truly rewarding, perhaps the greatest benefit of all is knowing that your contribution supports unparalleled opera from the Met's great stage and helps to bring this extraordinary art form to millions of opera lovers worldwide, through our radio broadcasts and our internationally acclaimed *Live in HD* movie-theater presentations.

THANK YOU FOR YOUR GENEROSITY!

For complete information on the privileges of membership, visit metopera.org/membership or call 212.362.0068.

The Metropolitan Opera acknowledges with great appreciation its global sponsors.

Bloomberg

**The Neubauer Family
Foundation**


ROLEX

Toll Brothers
America's Luxury Home Builder

PATRONS Annual memberships begin at \$2,500.

All Patrons enjoy priority ticketing for subscriptions and single tickets and may order tickets for the entire 2014–15 season now. Patrons also enjoy personalized service, exclusive access to the Patron Lounge, free coat check, dress rehearsal passes, invitations to MetTalks new production panels, young artist recitals, and much more.

SPONSOR PATRONS (\$5,000) are also invited to working rehearsals and are recognized in *Playbill* and the Met Season Book.

BENEFACTOR PATRONS (\$7,500) receive an invitation to the annual Lindemann Young Artist Concert and Reception.

PREMIERE CIRCLE SPONSORS (\$10,000) are invited to master classes and other presentations featuring Met artists.

GUILD MEMBERS Annual memberships begin at \$75.

All Guild members receive an annual subscription to *Opera News* magazine as well as discounts at the Met Opera Shop (including online), MetTalks, backstage tours, and more.

SUPPORTING MEMBERS (\$150) enjoy priority ticketing for Met performances, advance access to *Live in HD* tickets in the U.S. and Canada, and a one-week period of special access to the latest radio broadcast online.

DONOR MEMBERS (\$400) are invited to visit the Belmont Room, a Members-only lounge, to enjoy refreshments pre-performance and during intermission.

SPONSOR MEMBERS (\$750) receive all of the Guild benefits above, a copy of the Met Season Book, and additional privileges.

YOUNG ASSOCIATES Membership benefits begin at \$600.

For opera lovers ages 21 to 45, this program offers the perfect way to learn about opera and socialize all year long. Members enjoy receptions, discussions with artistic staff, young artist performances, and an exclusive backstage tour, as well as Guild member benefits.

FRIEND (\$600) The introductory level of Young Associates, for members in their 20s and 30s.

GOOD FRIEND (\$1,250) Full Young Associate membership benefits, for a great year of opera.

BEST FRIEND (\$2,500) Patron and Young Associate benefits, for the complete Met experience.

A copy of the most recent Annual Report of the Metropolitan Opera Association, Inc., filed with the Attorney General of the State of New York, may be obtained upon request addressed to: The Metropolitan Opera, Lincoln Center, New York, NY 10023, or to The Office of the Attorney General, 120 Broadway, New York, NY 10271.

The Metropolitan Opera

Create Your Own Today!

Photo credits: Krzysztof Bielinski (*Bluebeard's Castle*); Marty Sohl/Metropolitan Opera (*Les Contes d'Hoffmann*; 11: *Macbeth*; *Die Zauberflöte*; *Aida*; *Don Giovanni*; *Ernani*; *Hansel and Gretel*); Ken Howard/Metropolitan Opera (*Lucia di Lammermoor*; 10: *Macbeth*; *Carmen*; *Aida*; *Il Barbiere di Siviglia*; *La Traviata*; *Manon*; *Don Carlo*; *Un Ballo in Maschera*); Anne Deniau/Metropolitan Opera (*Le Nozze di Figaro*; *Cavalleria Rusticana/Pagliacci*); Jonathan Tichler/Metropolitan Opera (8: *La Bohème*; Levine); Richard Hubert Smith (English National Opera production photo of *Death of Klinghoffer*); Beth Bergman (*Lady Macbeth of Mtsensk*); Beatriz Schiller/Metropolitan Opera (*Die Meistersinger von Nürnberg*); Brigitte Lacombe/Metropolitan Opera (*The Merry Widow*); Andrea Kremer (Baden-Baden production photo of *Iolanta*); Ken Howard (Santa Fe production photo of *La Donna del Lago*); Jack Vartoogian/Metropolitan Opera (*The Rake's Progress*); Matthias Bothor/Deutsche Grammophon (Pollini); Dario Acosta (Bronfman); Claudia Leopold (Pape); Cory Weaver/Metropolitan Opera (9: *La Bohème*)